



# GEORGE TOOLS SMALL PARTS WASHER GT9500004

## Instruction manual

*Read instructions carefully before operating.*

- Do not over fill solvent. Fill to just below level of parts tray
- Do not use any solvent with a flashpoint below 150°F.
- Only use petroleum or biodegradable based solvents that are approved for electric parts washers.
- Use only in a well ventilated area.
- Do not operate while smoking.
- Do not operate near heat sources such as heaters, sparks, open flame, etc.
- Should fire occur in parts washer, do not attempt to move parts washer, Lid is on a fusible link and will fall automatically to extinguish flame.
- Do not modify or jam lid to keep lid locked in an open position.
- Replace damaged parts immediately.
- Use only on grounded 115Volt/60hz or 230Volt/50hz outlet.

## TECHNICAL DATA:

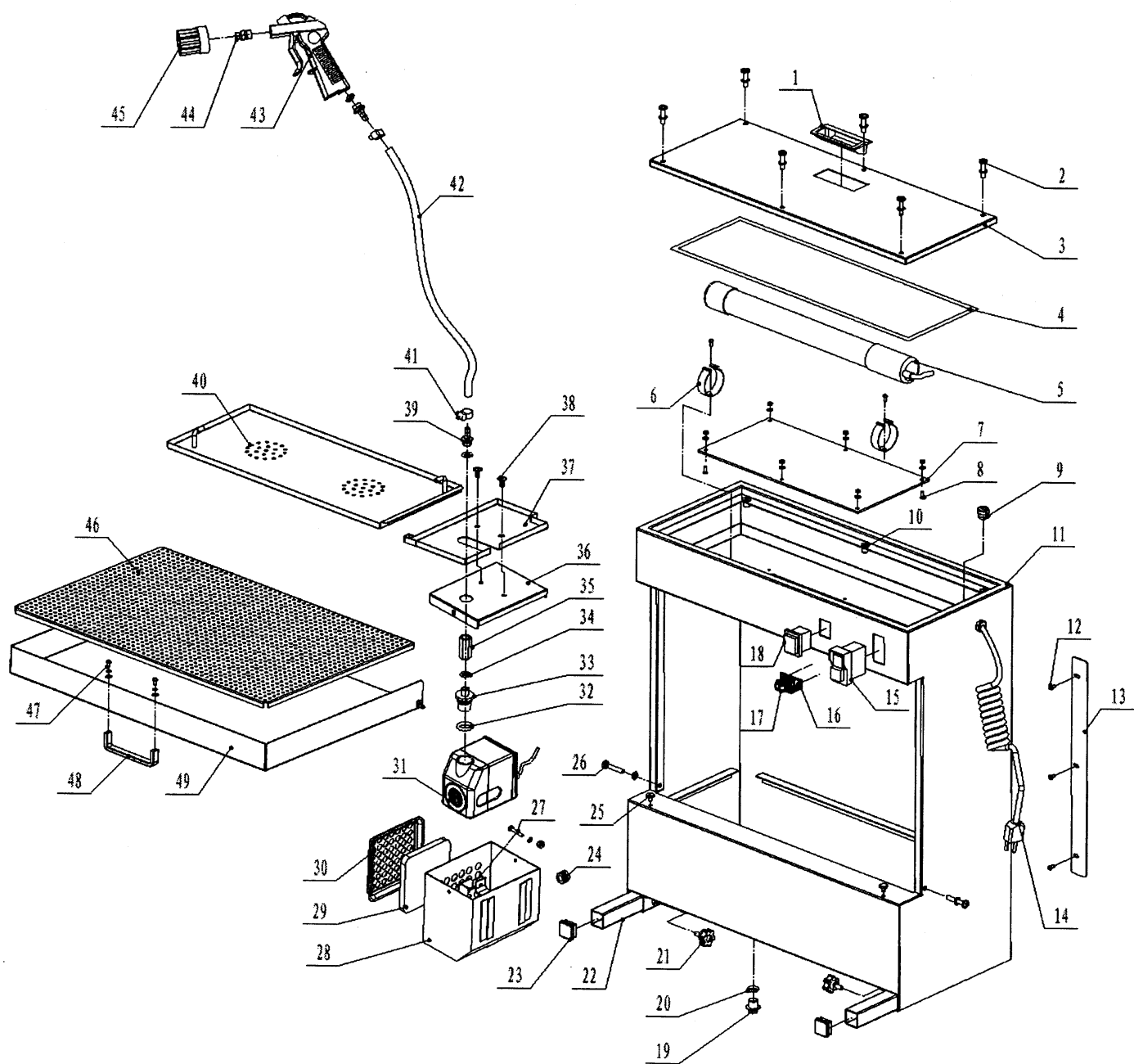
Overall dimension: 560X545X630MM

Max solvent capacity: 14L

Flowing rate: 1.9L/min

Power: 43W(120V/60HZ); 26W(230V/50HZ)

Net weight: 24.5KG



PART NO.	DESCRIPTION	SPECIFICATION	QTY
1.	Plastic knob		1
2	screw	M6*25	6

3	Top cover	Q195	1
4	Seal tape		1
5	Light		1
6	light clipper		2
7	Organic glass		1
8	Screw	M4*12	6
9	Feed through		2
10	Nut	M6	8
11	Body		1
12	Screw	M4*8	3
13	Cable fixing plate	Q195	1
14	cable		1
15	Switch	KJD17	1
16	Fixing plate	Q195	1
17	clipper		1
18	Switch	KCD4	1
19	plug		1
20	O-ring		1
21	Handle bar		2
22	Support handle		2
23	plug		2
24	Cable sleeve		1
25	Rubber screw		2
26	screw	M6*35	2
27	screw	M5*20	1
28	Pump housing		1
29	Filter		1

30	Filter cover		1
31	Pump	AP2000	1
32	O-ring	14*2. 65	1
33	connector		1
34	O-ring	10*2.65	3
35	G1/4 connector	G1/4*35	1
36	Pump cover		1
37	Right filtration plate		1
38	screw	M6*12	2
39	connector		1
40	Left filtration plate		1
41	clipper		2
42	Hose		1
43	Cleaning pistol		1
44	Connector		1
45	Brush		1
46	Filtration plate		1
47	screw		2
48	Handle		1
49	Front door		1